

# WATER COIL SCHEDULE - HEATING

DIV 238216

DESIGNATION	SERVICE	LOCATION	COOLING								HEATING				COIL							EQUIPMENT			REMARKS (1,2,3,...) ACCESSORIES (A,B,C,...)		
			TOTAL CAP. (MBH)	SENSIBLE CAP. (MBH)	EAT		LAT		FLUID		TOTAL CAP. (MBH)	AIR		FLUID		S.A. FLOW (CFM)	O.A. FLOW (CFM)	# OF ROWS/ FPI	FLOW RATE (GPM)	MAX. FACE VEL (FPM)	AIR PRES. DROP (INCHES WC)	WTR PRES DROP (FT OF HEAD)	TUBE THICKNESS (INCHES)	MODEL NO.:		MFG.	WEIGHT
					DB F	WB F	DB F	WB F	EFT (DB F)	LFT (DB F)		EAT (DBF)	LAT (DBF)	EFT (DB F)	LFT (DB F)												
CC-1	AHU-X	MER RM #	-	-	-	-	-	-	-	-	-	-	-	-	-	-	-	-	-	-	-	-	-	-	-	-	1,2,3,4,5,6,7,8,9 A,B,C
-	-	-	-	-	-	-	-	-	-	-	-	-	-	-	-	-	-	-	-	-	-	-	-	-	-	-	

**REMARKS:**  
 1. AIR SIDE FACE VELOCITY SHALL NOT EXCEED 450 FPM.  
 2. MINIMUM TUBE THICKNESS SHALL BE 0.35 INCHES  
 3. MAXIMUM AIR PRESSURE DROP SHALL BE 0.2 INCHES WC  
 4. MAXIMUM WATER PRESSURE DROP SHALL BE 10 FT WC  
 5. FPI SHALL NOT BE GREATER THAN 12.  
 8. COIL CONNECTIONS SHALL BE MALE NPT, OR FLANGE  
 9. COIL AND HEADERS SHALL BE FABRICATED OF NON-FERROUS MATERIAL

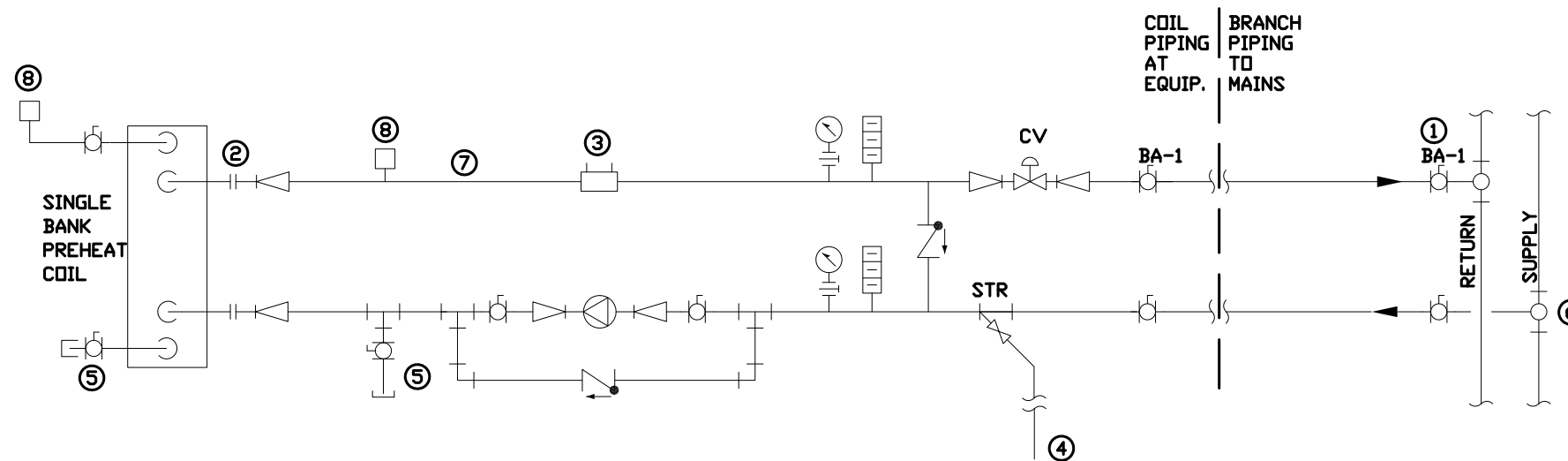
**ACCESSORIES:**  
 A. COIL SHALL HAVE HIGH POINT MANUAL VENT  
 B. COIL SHALL HAVE LOW POINT DRAIN  
 C. STACKED COILS SHALL HAVE BALANCING VALVE FOR EACH COIL, ON RETURN SIDE.

## # KEY NOTES:

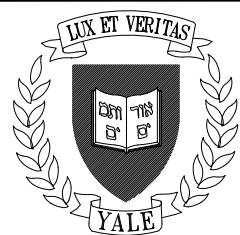
1. PROVIDE ISOLATION VALVES AT COIL AND MAIN, FOR PIPE GREATER THAN TWO INCH PROVIDE TYPE BF VALVE (BUTTERFLY).
2. PROVIDE BREAK FLANGES, OR UNIONS FOR COIL REMOVAL.
3. BALANCING VALVE(S) SHALL BE MANUAL TYPE.
4. PIPE TO FLOOR DRAIN
5. LOW POINT DRAIN WITH BALL VALVE, AND HOSE CONNECTION CAP.
6. BRANCH PIPING SHALL BE CONNECTED AT TOP OF MAIN.
7. PIPE DIAMTER SHALL BE SIZED NOT TO EXCEED A 5 FT/S VELOCITY.
8. PROVIDE AIR VENTS AS INDICATED, AT COIL AND PIPING.

## GENERAL NOTES:

1. -



**1 SINGLE BANK PREHEAT COIL**  
SCALE: NTS



**Yale University**  
Facilities Planning & Construction  
Standard Detail

DETAIL TITLE:  
SINGLE BANK PREHEAT COIL

CAD DETAIL NO.:  
SD238216-01

DATE: 01/16/2019  
SCALE: N.T.S.  
BY: MGL