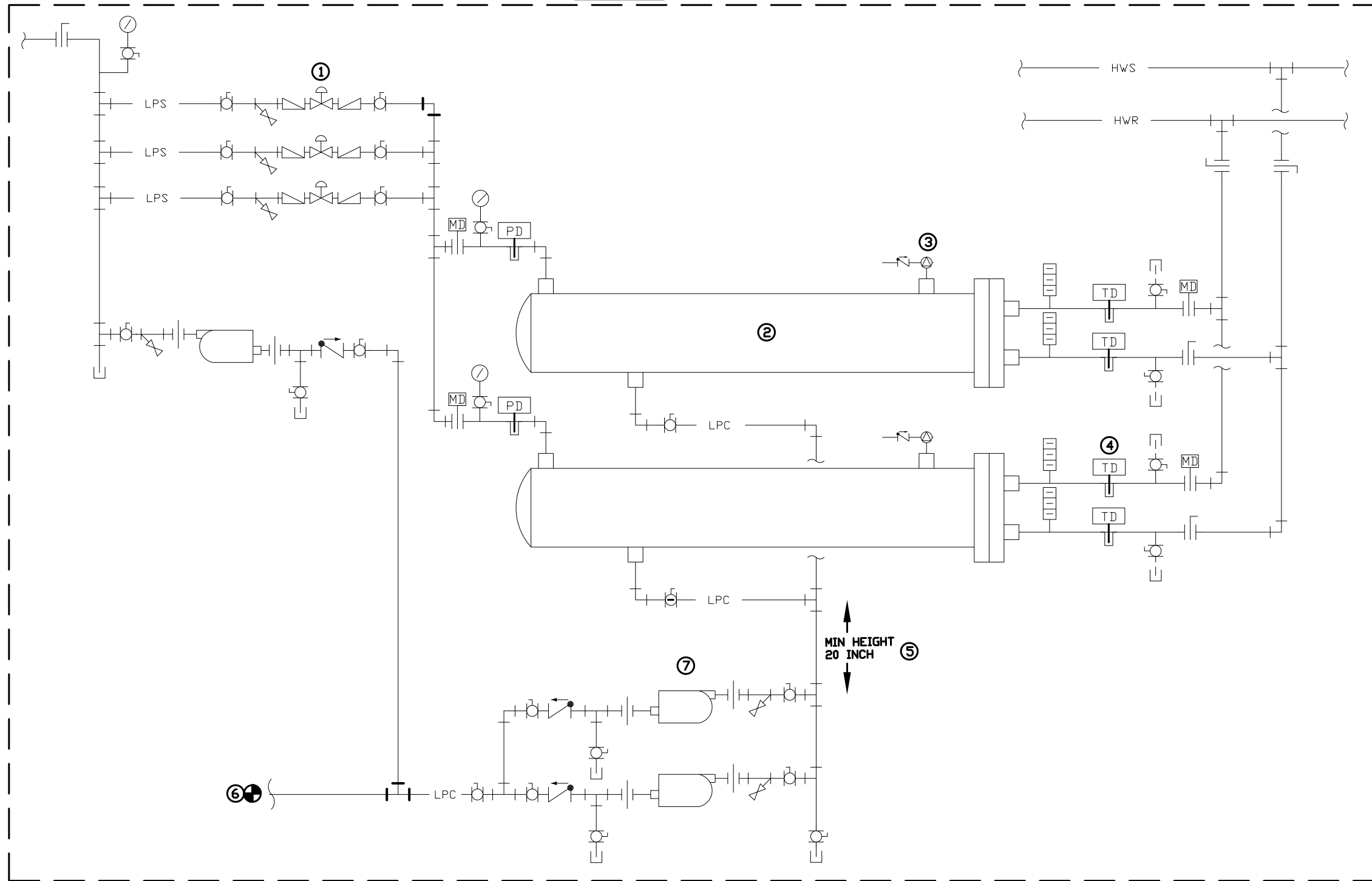


BLDG MER



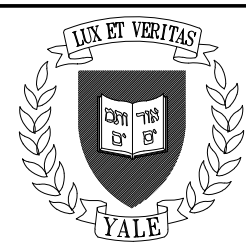
KEY NOTES:

1. 1/3 STEAM CONTROL VALVE CONFIGURATION. VALVES SHALL HAVE MANUAL OVER-RIDE OPTION FOR PURPOSE OF BYPASS DURING WARM-UP AND TESTING.
2. SHELL AND TUBE STEAM TO HW HX
3. VACUUM BREAKER WITH CHECK VALVE.
4. TEMPERATURE TRANSDUCER, TYP.
5. MINIMUM DISTANCE FROM BOTTOM OF HX TO INLET OF STEAM TRAP 20 INCHES.
6. CONNECT TO CONDENSATE LIQUID MOVERS
7. PROVIDE STEAM TRAPS, SEE APPLICABLE DETAIL FOR REQUIREMENTS.

GENERAL NOTES:

1. BOTH STEAM AND HW CONNECTIONS AT HX SHALL BE FLANGE TYPE.
2. SHALL BE WELDED, REFER TO SITE STANDARD FOR REQUIREMENTS
3. VALVES SHALL BE FLANGE TYPE CONNECTION.

1 STEAM TO HW HX DETAIL
SCALE: NTS



Yale University
Facilities Planning & Construction
Standard Detail

DETAIL TITLE:
STEAM TO HW HX DETAIL

CAD DETAIL NO.:
SD235700-01

DATE: 01/16/2019
SCALE: N.T.S.
BY: MGL