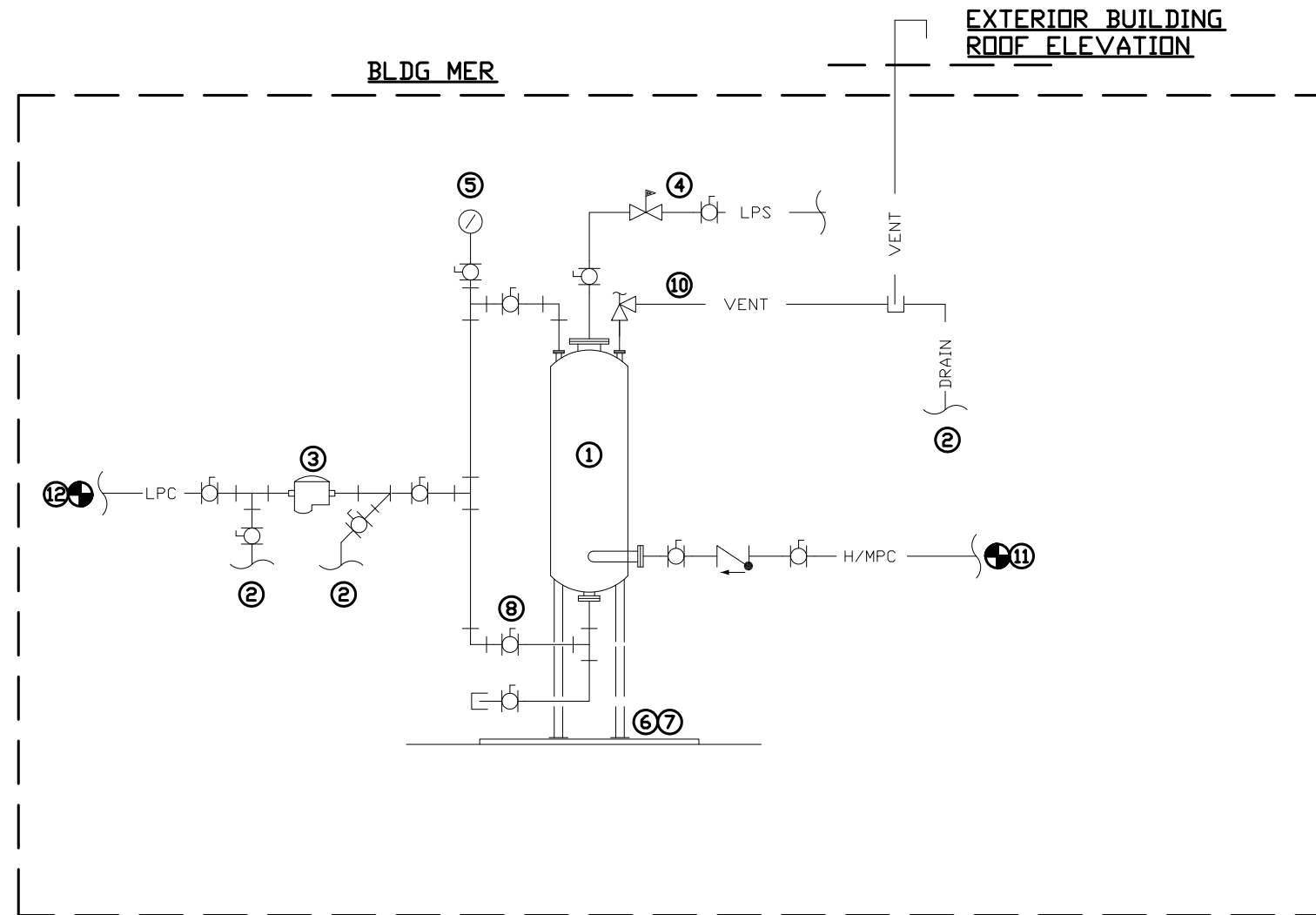
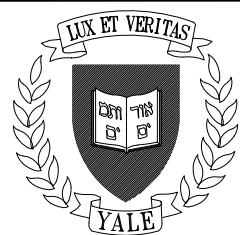


- # KEY NOTES:
- FLASH TANK, ASME RATER FOR 300 PSIG
 - PIPE TO FLOOR DRAIN, PROVIDE AIR GAP FITTING.
 - PROVIDE CONDENSATE TRAP ASSEMBLY.
 - PROVIDE BACKPRESSURE PRV AND PIPE TO LPS DISTRIBUTION
 - PROVIDE PRESSURE GAUGE
 - SECURE TANK TO HOUSEKEEPING PAD.
 - PROVIDE 4 INCH HIGH HOUSE KEEPING PAD.
 - VALVES SHALL BE FLANGE TYPE CONNECTION.
 - CONDENSATE PIPE SHALL COMPLY WITH SITE STANDARDS, SCH 'XS' CARBON STEEL.
 - PROVIDE SAFETY VALVE, AND VENT TO EXTERIOR OF STRUCTURE.
 - HPC/MPC, PROVIDE CHECK VALVE
 - LPC CONNECT TO DISCHARGE SOURCE



- GENERAL NOTES:
- EQUIPMENT AND MATERIALS SHALL COMPLY WITH APPLICABLE UNIVERSITY STANDARDS.

1 FLASH TANK DETAIL
SCALE: NTS



Yale University
Facilities Planning & Construction
Standard Detail

DETAIL TITLE:
FLASH TANK DETAIL

CAD DETAIL NO.:
SD232223-03

DATE: 01/16/2019
SCALE: N.T.S.
BY: MGL