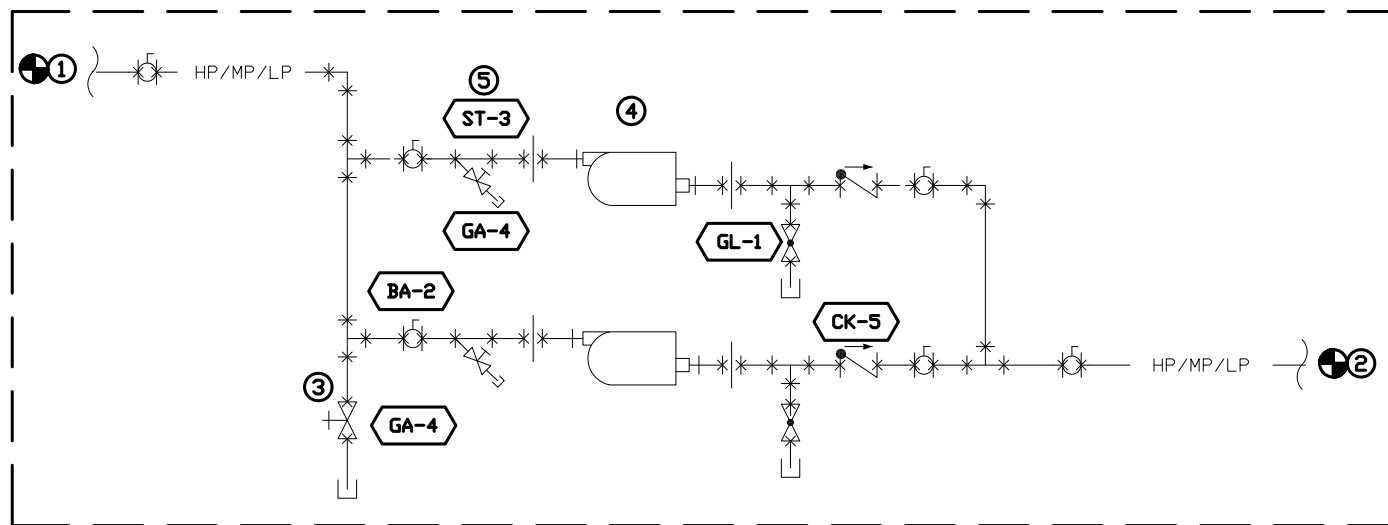
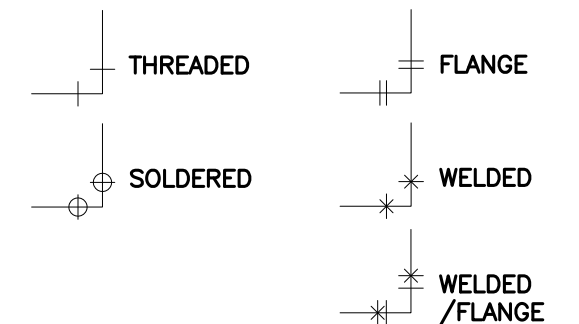


1 STEAM TRAP FOR HP, AND MP BLDG SYSTEMS
SCALE: NTS

- # KEY NOTES:
1. CONDENSATE POC.
 2. CONDENSATE POD.
 3. DIRT TRAP.
 4. MP AND HP SYSTEMS SHALL BE PROVIDED WITH ONE OF TWO TRAPS.
 - 4.1. WATSON MCDANIEL: WT3001-13-N
 - 4.2. GESTRA: MK45-1
 5. WYE STRAINER SHALL HAVE 0.033 PERF. MESH SCREEN.

- GENERAL NOTES:
1. EQUIPMENT AND MATERIALS SHALL COMPLY WITH APPLICABLE UNIVERSITY STANDARDS.

PIPE SYMBOLS



2 STEAM TRAP FOR HP, MP AND LP MANHOLE LOCATIONS
SCALE: NTS



Yale University
Facilities Planning & Construction
Standard Detail

DETAIL TITLE:
CONDENSATE STEAM TRAP FOR HP&MP
BLDG SYSTEMS, & HP/MP/LP MANHOLES

CAD DETAIL NO.:
SD232216-02

DATE: 01/16/2019
SCALE: N.T.S.
BY: MGL